
How to open Screen Master data files in Data Manager
Use the Data Manager Software add-on for Microsoft Excel to read ScreenMaster data



Configuration Description:

This technote explains the procedure for reading the data saved by the ScreenMaster recorders in Microsoft Excel by using the Datamanager add-on for Excel.

Applies to:

ScreenMaster trend and log data stored on the Compact Flash or Smart Media cards, or files copied via ftp to disks. Microsoft Excel 97 or later is required.

Instructions:

The procedure is explained in the following steps: It is assumed that the Datamanager Software add-in is installed in your computer and linked to Microsoft Excel. For more information on this, please refer to the Install Instructions on the Datamanager CD.

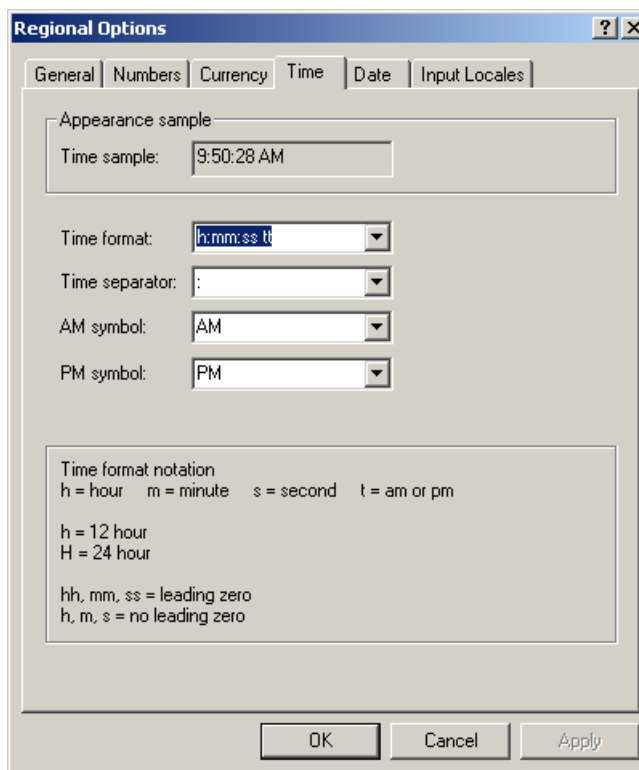
1. The Time and Date format of the computer must match the settings in the ScreenMaster in order for those columns to be displayed properly. To confirm or change the Time and Date formats in your computer:

The procedure is explained for the Windows 2000 Operating system. Other versions of Windows will have similar features for changing these settings.

Change the Time setting:

In Windows 2000, click **Start**, select **Settings, Control Panel**, and then **Regional Options** in the Control Panel.

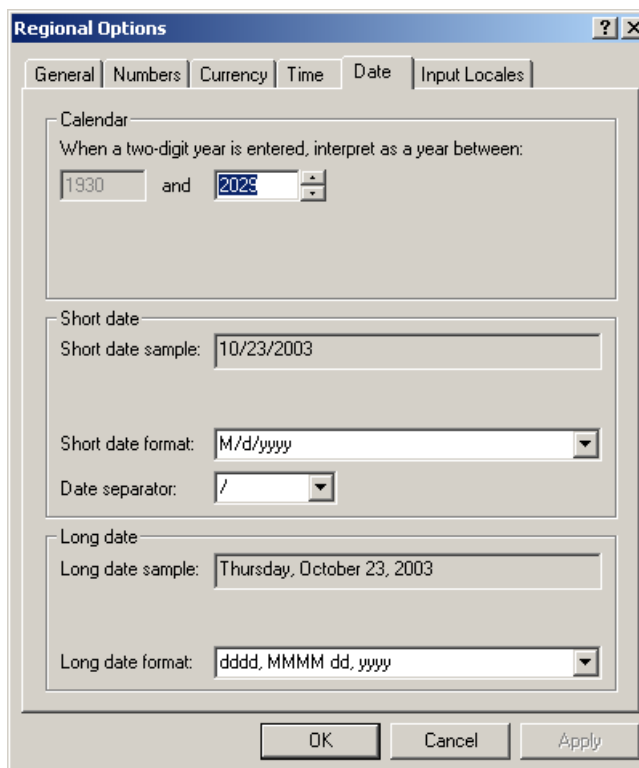
On the **Time** tab, select the format that matches the settings in the ScreenMaster.



Change the Date setting:

On the **Date** tab, select the format that matches the settings in the ScreenMaster.

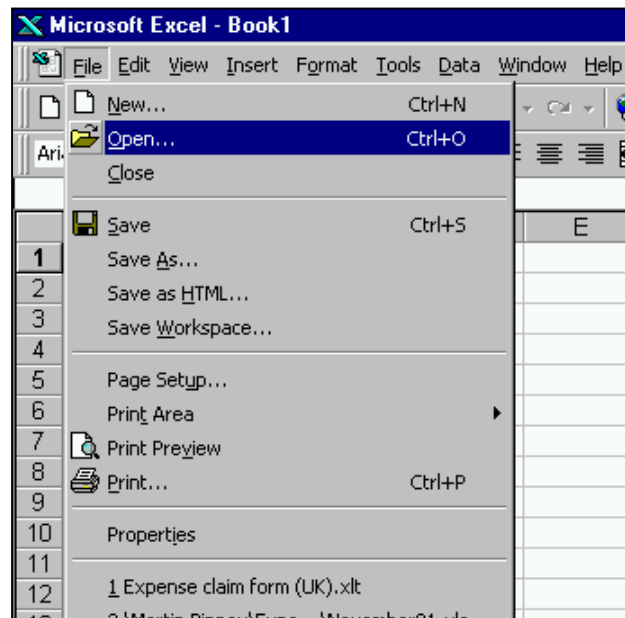
Click on **OK** to accept the changes.



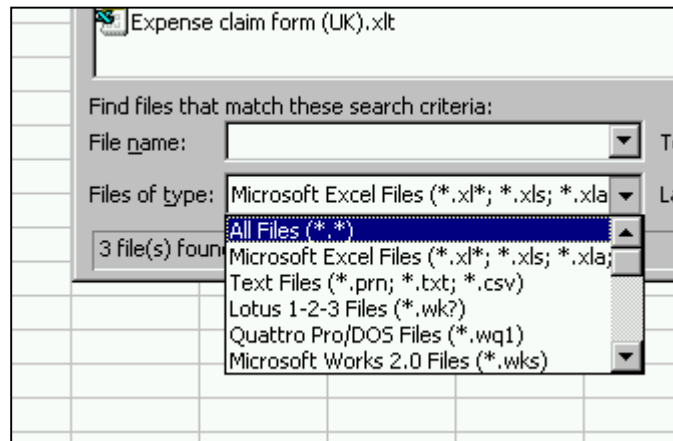
3. Open your datafile:

Start **Microsoft Excel**.

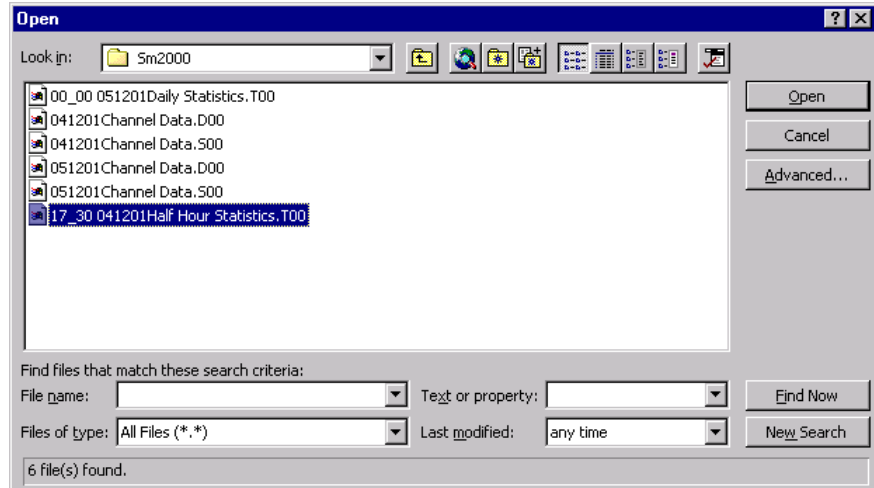
Select **Open** from the **File** Menu



Select **All Files (*.*)** from the **Files of type** menu

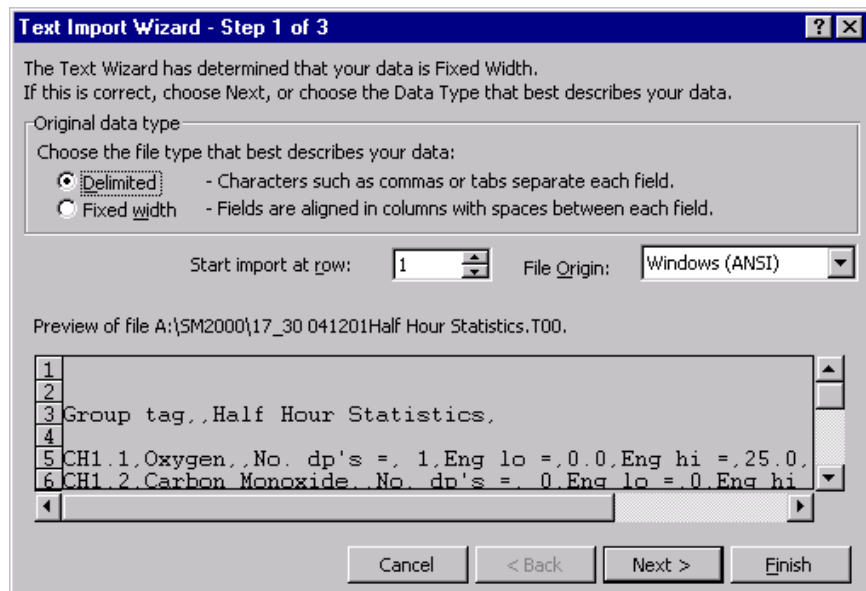


Locate and open the file that you wish to view.

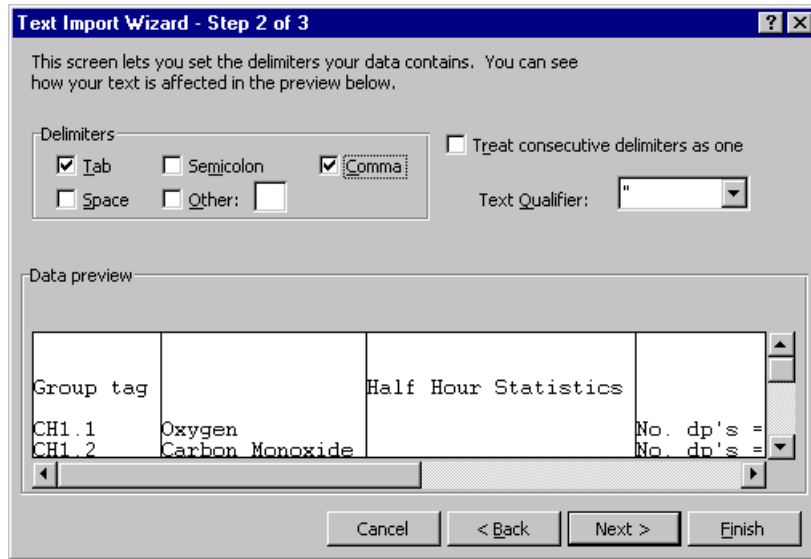


4. Import the Datamanager file:

In step 1 of the 'Text Import Wizard' select 'Delimited' then click 'Next'



In step 2 of the 'Text Import Wizard' select 'Comma' 'Delimiters' then click 'Finish'.



5. Your data will now be displayed as an Excel spreadsheet.

14	Date	Time	Totalizer T	Source tag	Batch Totals	Total units	Max value	Min value	Average	Units	Secure TotEvents
17	04/12/01	17:30:00	Oxygen	Oxygen	0 %		14.1	9.1	11.6 %		0 Reset
18	04/12/01	17:30:00	Carbon Mc	Carbon M	0 PPM		562	364	463 PPM		0 Reset
19	04/12/01	17:30:00	Particulate	Particul	0 mg/m3		141	91	116 mg/m3		0 Reset
20	04/12/01	17:30:00	Secondary	Sec Temp	0 °C		123	123	123 °C		0 Reset
21	04/12/01	17:30:00	Primary C	Pri Temp	0 °C		25	25	25 °C		0 Reset
22	04/12/01	18:30:00	Oxygen	Oxygen	0 %		14.1	9.1	11.6 %		0 Reset
23	04/12/01	18:30:00	Carbon Mc	Carbon M	0 PPM		562	364	463 PPM		0 Reset
24	04/12/01	18:30:00	Particulate	Particul	0 mg/m3		141	91	116 mg/m3		0 Reset
25	04/12/01	18:30:00	Secondary	Sec Temp	0 °C		123	123	123 °C		0 Reset
26	04/12/01	18:30:00	Primary C	Pri Temp	0 °C		25	25	25 °C		0 Reset
27	04/12/01	19:00:00	Oxygen	Oxygen	0 %		14.1	9.1	11.6 %		0 Reset
28	04/12/01	19:00:00	Carbon Mc	Carbon M	0 PPM		562	364	463 PPM		0 Reset
29	04/12/01	19:00:00	Particulate	Particul	0 mg/m3		141	91	116 mg/m3		0 Reset
30	04/12/01	19:00:00	Secondary	Sec Temp	0 °C		123	123	123 °C		0 Reset
31	04/12/01	19:00:00	Primary C	Pri Temp	0 °C		25	25	25 °C		0 Reset
32	04/12/01	19:30:00	Oxygen	Oxygen	0 %		14.1	9.1	11.6 %		0 Reset
33	04/12/01	19:30:00	Carbon Mc	Carbon M	0 PPM		562	364	463 PPM		0 Reset
34	04/12/01	19:30:00	Particulate	Particul	0 mg/m3		141	91	116 mg/m3		0 Reset
35	04/12/01	19:30:00	Secondary	Sec Temp	0 °C		123	123	123 °C		0 Reset

Notes: